

Case Report



Successful Below-the-Knee Angioplasty Using the Sublime™ Radial Access Platform



Ankur Lodha, MD
Cardiovascular Institute of the South
Lafayette, LA

PATIENT PRESENTATION / BASELINE

A 52-year-old male presented with discomfort to his left calf and had pre-gangrenous changes of nonhealing wounds on the toes of his left foot.

DIAGNOSTIC FINDINGS

Diagnostic angiogram of the left lower extremity revealed a 100% occluded left anterior tibial (AT) artery, which was most likely the cause of the patient's bluish discoloration (Figure 1).

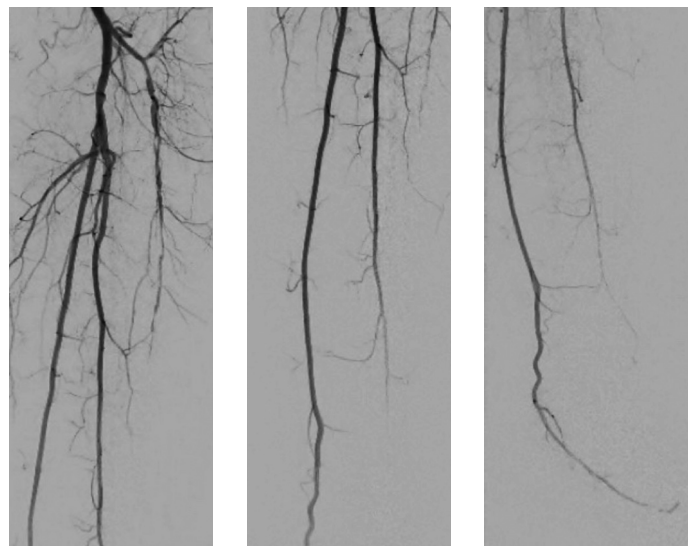


Figure 1: Angiogram revealed 100% occluded left AT artery



Figure 2: Guidewire and PTA Catheter attempt to cross the lesion

TREATMENT

Access was achieved via the left radial artery using ultrasound guidance. A pigtail catheter was inserted over a guidewire and placed in the distal abdominal aorta so an abdominal aortography and a left femoral artery angiography could be performed. Once completed, a 5 Fr, 150 cm Sublime™ Radial Access Guide Sheath was inserted and a guidewire and a 2.0 X 220 mm Sublime™ Radial Access RX PTA Catheter were advanced to cross the lesion in the AT artery. The balloon was inflated in an attempt to open the lesion; however, the guidewire was not able to cross (Figure 2).

Case Report



Figure 3: Sublime™ Radial Access 2.0 mm and 3.0 mm x 220 mm .014 RX PTA Dilatation Catheter inflations

The guidewire was then repositioned in the posterior tibial artery where it crossed the pedal loop and was advanced retrograde to the AT artery. A 2.0 X 220 mm Sublime™ Radial Access .014 RX PTA Dilatation Catheter was then advanced to the lesion in the AT artery where it tracked through the pedal loop. The balloon was inflated and removed after deflation. A 3.0 X 220 mm Sublime™ Radial Access .014 RX PTA Dilatation Catheter was then inserted, advanced to the lesion in the AT artery, and was inflated and removed (Figure 3).

POST PROCEDURE OUTCOME

The patient underwent balloon angioplasty of the left AT artery. Following the successful intervention, the patient's angiography revealed 100% recanalization of the affected artery (Figure 4).

CONCLUSION

The Sublime™ RX PTA Catheters provided the additional working length required to cross the patient's pedal loop and treat the lesion from a retrograde approach.



Figure 4: Arteriogram demonstrating 100% recanalization of the affected artery



Surmodics, Inc.
7905 Golden Triangle Drive
Suite 190
Eden Prairie, MN 55344 USA
Toll Free: 888-626-8501
Phone: 952-500-7400
www.sublimeradial.com

Caution: Federal (US) law restricts this device to sale by or on the order of a physician. Please refer to Instructions for Use for indications, contraindications, warnings, and precautions.

SURMODICS, SUBLIME and the SURMODICS and SUBLIME logos are trademarks of Surmodics Inc. and/or its affiliates.
©2022 Surmodics, Inc. All rights reserved. SRDX-SRA-716 A