

Case Report



Uterine Fibroid Embolization Assisted with the Sublime™ Radial Access Guide Sheath



Aaron Kovaleski, MD
Endovascular Consultants of Colorado
Denver, CO

PATIENT PRESENTATION / BASELINE

A 49-year-old female presented to the clinic with heavy menstrual bleeding lasting up to 21 days at a time. Patient had severe pelvic cramping and a known diagnosis of fibroids.

DIAGNOSTIC FINDINGS

Diagnostic imaging revealed large uterine fibroids (Figure 1).

TREATMENT

Access was obtained via the radial artery using ultrasound guidance. An introducer sheath was exchanged for a 6 Fr, 120 cm Sublime™ Radial Access Guide Sheath which was easily tracked through the patient's tortuous aorta. A microcatheter was advanced through the guide sheath and embolization beads were delivered to the right and left uterine arteries (Figure 2).

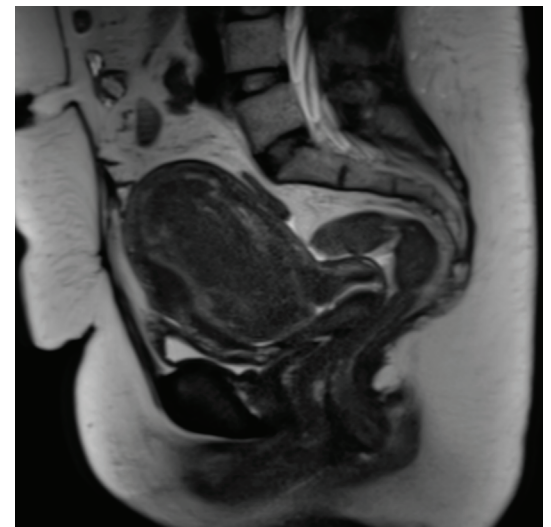


Figure 1: Diagnostic imaging revealing uterine fibroids

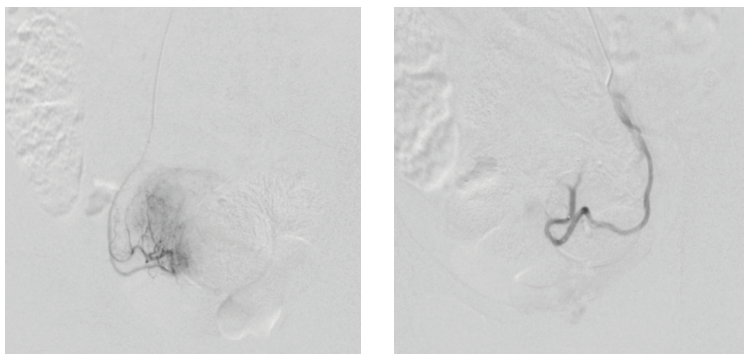


Figure 2: Embolization treatment to the right and left uterine arteries

POST PROCEDURE OUTCOME

Following the successful intervention, the patient's severe pelvic cramping and bleeding was reduced/eliminated.

CONCLUSION

The Sublime™ Radial Access Guide Sheath provided the necessary flexibility to be delivered through tortuous anatomy while also providing the necessary support to relieve the tension on the microcatheter.

"The support from the Sublime Guide Sheath enables me to get through challenging cases that would be nearly impossible using a femoral stick"
— Dr. Kovaleski



Surmodics, Inc.
7905 Golden Triangle Drive
Suite 190
Eden Prairie, MN 55344 USA
Toll Free: 888-626-8501
Phone: 952-500-7400
www.sublimeradial.com

Caution: Federal (US) law restricts this device to sale by or on the order of a physician. Please refer to Instructions for Use for indications, contraindications, warnings, and precautions.

SURMODICS, SUBLIME and the SURMODICS and SUBLIME logos are trademarks of Surmodics Inc. and/or its affiliates. ©2022 Surmodics, Inc. All rights reserved. SRDX-SRA-745 A